




# DEPARTMENT CATALOG

---



# Why Choose American Tool & Die?



Since 1982, American Tool & Die has serviced manufacturers and businesses across industry lines through CNC, turning and milling, metal fabrication, metal stampings, automation and assembly, and designing and building superior dies, jigs, fixtures, gauges, and other special machines

With services spanning seven departments and exploring new technologies, American Tool & Die has earned a reputation for uncompromising excellence and accuracy.  
We don't just ensure "quality" — we build it!



# Table of Contents

<b>CNC</b>	<b>3</b>
<b>Custom Machines</b>	<b>4</b>
<b>Tool &amp; Die</b>	<b>5</b>
<b>Stamping</b>	<b>6</b>
<b>Wire EDM &amp; Refurbishment</b>	<b>7</b>
<b>Design &amp; Quality Control</b>	<b>8</b>
<b>Industries Served</b>	<b>9</b>



# CNC Machining

*We will turn your concept into a  
working component*

Reverse engineering

Machined parts up to 60" in  
length

Hard turning up to 20"  
diameter

Aluminum, Steel, Stainless,  
Wood, & Plastics material  
applications

Standard lead time of 4-5  
weeks


**We can produce detailed  
parts design, secondary  
operations, custom one-off  
parts, production runs and  
prototypes to meet your  
specifications.**






# Custom Machines

*From I.D.E.A. to Reality*

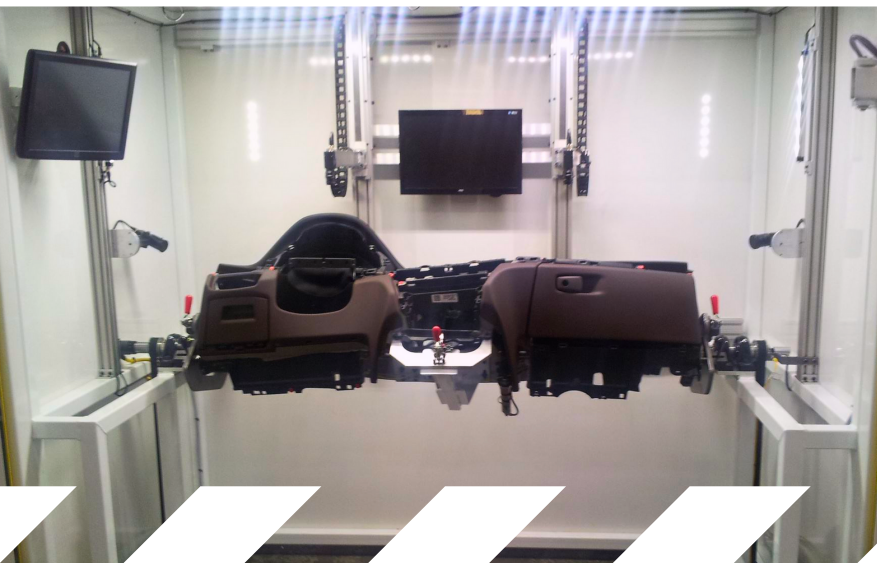


**Innovation-** Equipment specialization and creative solutions



**Design-** Custom fixtures & assembly built for efficiency, speed, and quality

**Ergonomics-** Helping your staff work smarter, not harder; reducing fatigue & repetitive movements, increasing comfort & safety



**Automation-** Multi-industry, robotic solutions, material handling, turnkey production lines, fixtures & assembly

**We can design and build a custom machine to meet your needs and expectations.**



# Tool & Die

*Your Turn-Key Tool and Die Making  
Service Since 1982*

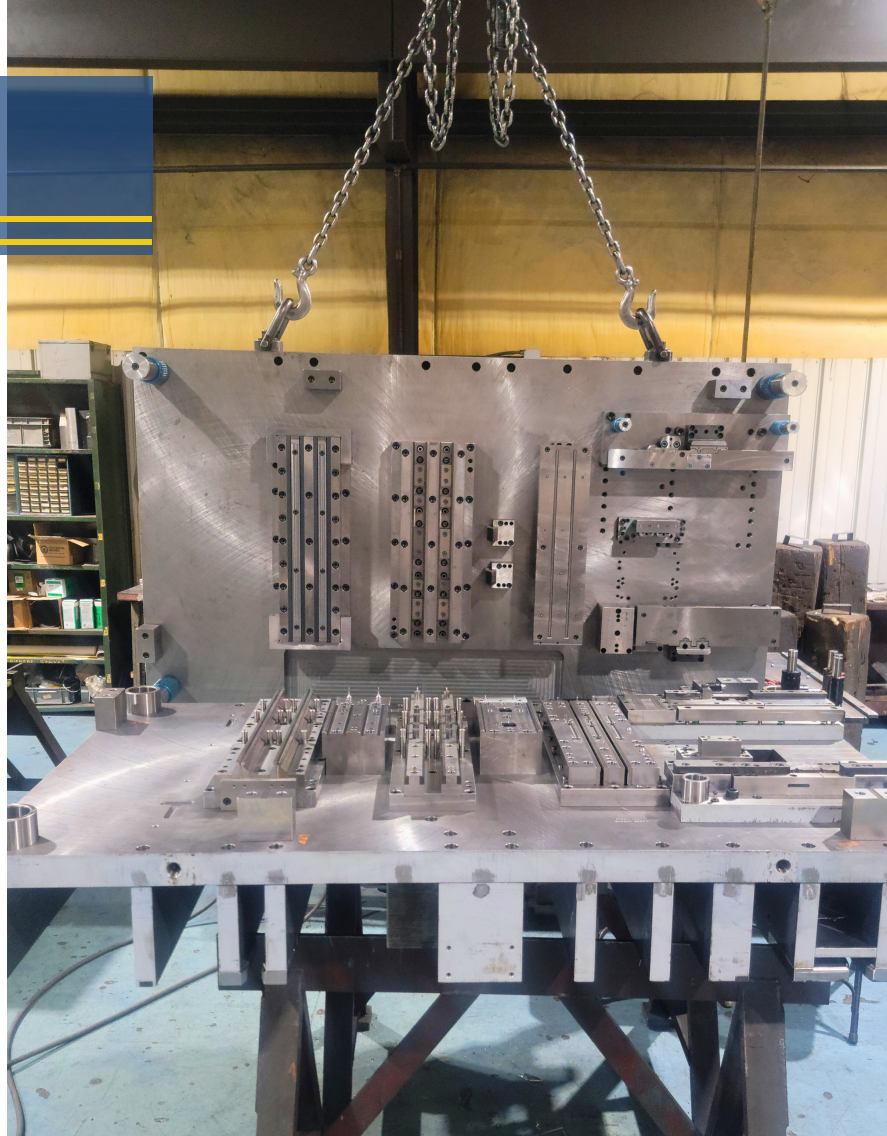
Specializing in progressive,  
transfer, & line dies

Built to your specifications with  
ability to reverse engineer and  
build dies from a source part

Rapid response repairs and  
quick turnarounds available

Value added services include  
die storage, die simulations, &  
stamping production

**American Tool & Die's Tool  
Room is known for  
accommodating  
businesses of all sizes to  
meet their tooling needs.**







# Stamping

*Full-service metal stamping production  
with a broad suite of capabilities*

Presses ranging from  
22-600 tons & bed sizes up to  
60" x 108"

High-volume capacity

Over fifty presses and three  
divisions to run any size order

Value-added services including  
assembly, projection welding,  
soldering, heat treating and  
more

**With a full range of stamping  
equipment, our metal  
stamping solutions are  
suitable for high-volume,  
high-tonnage stamping  
requirements, as well as small  
stamping operations for  
scaled-down products.**



# Wire EDM

*From raw material to complex geometries and miniature components*

High-precision metal fabrication on hard metals and exotic alloys

Tight tolerances as close as  $\pm .00005"$



## Refurbishment

*We will bring your equipment back to original specifications*

Machine, industrial pump, and die repair and rebuild

Secure and confidential with your designs

Complete turnkey rebuilds





# Design

*Designs that will fulfill or even exceed the needs of your business*

Engineered to your needs

Working with you each step for maximum efficiency and quality

Using 3D modeling, Autocad, and Solidworks

# Quality Control

*We're committed to 100% customer satisfaction in all we do*

Thorough initial analysis and detailed final inspection for products and materials

ISO 9001 certified

Calibrated to international or national standards





# INDUSTRIES SERVED



Aerospace



Appliances



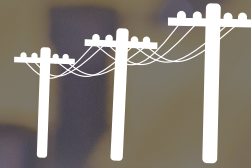
ATV



Automotive



Construction



Electrical



Firearms



HVAC



Power Equipment



Railroad





American Tool and Die is a Snell Manufacturing company. A family of industrial companies using business as a force for good. To learn more visit [snellmanufacturing.com](http://snellmanufacturing.com).



# CONTACT US



[americantoolanddie.com](http://americantoolanddie.com)



**(803) 568-2136**



[sales@atd1.net](mailto:sales@atd1.net)



**@American-Tool-and-Die**



**1245 Southbound Rd Swansea, SC 29160**

